

World's End Junior School - Early Help Offer

Safeguarding Team



Miss Gosal

Deputy Head



Mrs Barlow

Assistant Head/SENCo



Mrs Taylor

Pastoral Manager



Mrs Tite

Attendance Officer

We are always happy to help where we can and to try and help you find the right agency to support you. Come and talk to us, we are here for you.



Hello

I am Mrs Owens, Headteacher of World's End Junior School. I am proud that we have a supportive culture in school where we recognise our job is as much about safeguarding children as it is in educating them. We work closely with families to ensure our pupils thrive.

Our DSLs bring experience in supporting pupils and families in the following areas: accessing the curriculum, Special Educational Needs, Early Help and working with multi-agencies, and supporting with Children Absent from Education, and Children Missing in Education.

Early Help

What is Early Help?

Early Help is not a referral to Children's Services.

Early Help means taking action to support a child, young person or their family early in the life of a problem, as soon as it emerges. It can be required at any stage in a child's life from pre-birth to adulthood and applies to any problem or need that the family cannot deal with or meet on their own. It also applies to all children and young people, with any form of need.



The Birmingham Safeguarding Children Partnership have been working to improve outcomes for young people in Birmingham. The partnership – including representatives from statutory and voluntary agencies – are working together on a range of initiatives and improvements to the way we work with children and families within the city, strengthening the Birmingham Early Help and safeguarding system.

Mrs Taylor – Pastoral Manager offers Early Help support to families. This provision includes liaising with various housing associations such as Birmingham City Council, attendance concerns, issuing Food Bank Vouchers, Household Support Fund applications, housing applications, completing forms, transport applications, applying for secondary schools, helping parents who are facing difficulties, parenting advice, parenting courses, support with neurodiversity, and attending relevant meetings to ensure that parents, school and external agencies are working effectively and in partnership in the best interests of the child.

Early Help Assessments help to identify children and families who would benefit from early help. We will undertake an early help assessment and provide targeted early help support to address those needs to significantly improve outcomes. The Early Help Assessment looks at the thoughts and feelings of everyone involved – this includes the child, family and professionals. It identifies at what is going well and what needs to happen to make things better. An Our Family Plan will be written which outlines targets needed to support and which professional will lead on the target. Often a Family Connect referral will be made where support is needed from a Family Support Worker or outside agency.

The Early Help System

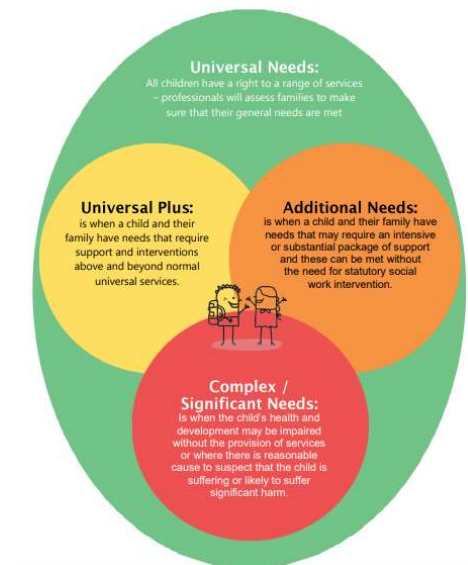
- Important to people, **GREEN** shows friends, family and the community that keep us all resilient.
- Universal Services for people in **BLUE** include schools and GPs.
- **PINK** indicates more acute services that provide focused help when needed



By early help we mean the total support that improves a family's resilience and outcomes or reduces the chance of a problem getting worse. In Birmingham, we are committed to making a difference to the lives of children and young people. We want Birmingham to be a place where all children and young people thrive and feel safe from harm. We recognise "It takes a city to raise a child", so by us all working together and helping families access the right help and support at the right time, at the earliest opportunity we can support children and young people to meeting their full potential and try to stop the challenges or difficulties that they are facing from escalating for them and their family. A range of agencies are involved in identifying where families need additional support, and in providing early help. Over 50,000 people work in early help from universal through to acute services in Birmingham This strategy will support us to have a consistent and coordinated approach across the partnership, so all families can expect the same support and good quality service no matter what their needs are and where they live.

Right Help, Right Time Layers of Need Right Help

Right Time evaluates the needs of children, young people and families in Birmingham, ensuring that our resources are targeted where they are most needed and will have the most impact by working within our layers of need. Having a strong early help offer is extremely important in ensuring we provide families with the support they need as soon as they need it, the Right Help at the Right Time preventing problems from escalating. Serious problems can cause Birmingham has four layers of need these layers are Universal needs - a range of services such as maternity services/health visiting services, school nursing, GP practices, early years, school and education settings, housing and youth services are provided as a right to all children including those with universal plus, additional and complex needs. These services are also well placed to



recognise and respond when extra support may be necessary. This may be because of the child's changing developmental, health and wellbeing needs or because of parental or family circumstances. Children with Universal Plus needs are best supported by those who already work with them such as health professionals, children's centres, school settings, organising additional support with local partners as needed. This can be through an Early Help Assessment and an Our Family Plan. For children with Additional needs a co-ordinated multidisciplinary approach is usually best led by a professional already known to the family. The lead professional will engage the family and other professionals to co-ordinate support through one plan. Children with complex and significant needs are those whose health and development may be impaired without the provision of services, disabled children, or those where there is reasonable cause to suspect they may be at risk of significant harm.

<p>Universal needs - a range of services such as maternity services/health visiting services, school nursing, GP practices, early years, school and education settings, housing and youth services are provided as a right to all children including those with universal plus, additional and complex needs.</p> <p>These services are also well placed to recognise and respond when extra support may be necessary. This may be because of the child's changing developmental, health and wellbeing needs or because of parental or family circumstances.</p>
<p>Children with Universal Plus needs are best supported by those who already work with them such as health professionals, children's centres, school settings, organising additional support with local partners as needed. This can be through an Early Help Assessment and an Our Family Plan.</p> <p>The Early Help Locality Teams can support the Lead Professional and family in a more intensive way. To access the Early Help Locality Teams click or type this link into your web browser: https://bit.ly/familycf and complete the Family Connect Form.</p>
<p>For children with Additional needs a co-ordinated multi-disciplinary approach is usually best led by a professional already known to the family. The lead professional will engage the family and other professionals to co-ordinate support through one plan. Where the support needed is more than a lead professional can organise effectively, the Early Help Locality Teams can support the lead professional and family in a more intensive way.</p> <p>To access the Early Help Locality Teams, click or type this link into your web browser: https://bit.ly/familycf and complete the Family Connect Form.</p>
<p>Children with Complex and Significant needs are those whose health and development may be impaired without the provision of services, or who are disabled, or those where there is reasonable cause to suspect they may be at risk of significant harm. Examples of specialist services include children's social care, accessed via CASS; Child and Adolescent Mental Health Services (CAMHS), accessed via Forward Thinking Birmingham; and Youth Offending Services.</p>

If the Safeguarding Team feels that more specialist support is needed for your child, with parents' consent, we will refer to outside agencies such as the STICK Team. The STICK team are committed to increasing therapeutic interventions in children and young people. They also aim to increase knowledge of trauma and ACES across professionals in Birmingham and equip these professionals to appropriately support the CYP in their care, preventing their needs escalating to requiring secondary care.



STICK TEAM

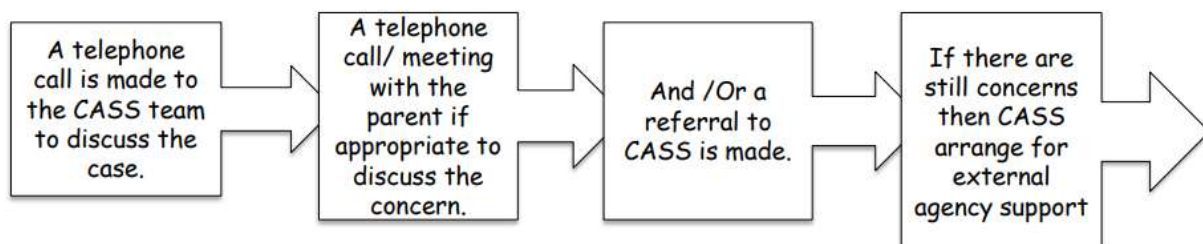
- **SCREENING** – Providing assessment and screening of CYP within schools, GP surgeries and family support services to increase early intervention and identify emerging symptoms
- **TRAINING** – Providing specialist training to professionals working alongside CYP to up skill and equip them to provide low level interventions
- **INTERVENTION** – Therapeutic menu of interventions for CYP who traditionally would not have met thresholds for a CAMHS Service
- **CONSULTATION** – Specialist consultation for those working in education, children's services and GP practice – encouraging wrap around care when it is most needed
- **KNOWLEDGE** – Practitioners include nurses, social workers, teachers and youth workers. The combined skill of this team brings a specialist knowledge and a comprehensive service

Where minds matter

Open Communication

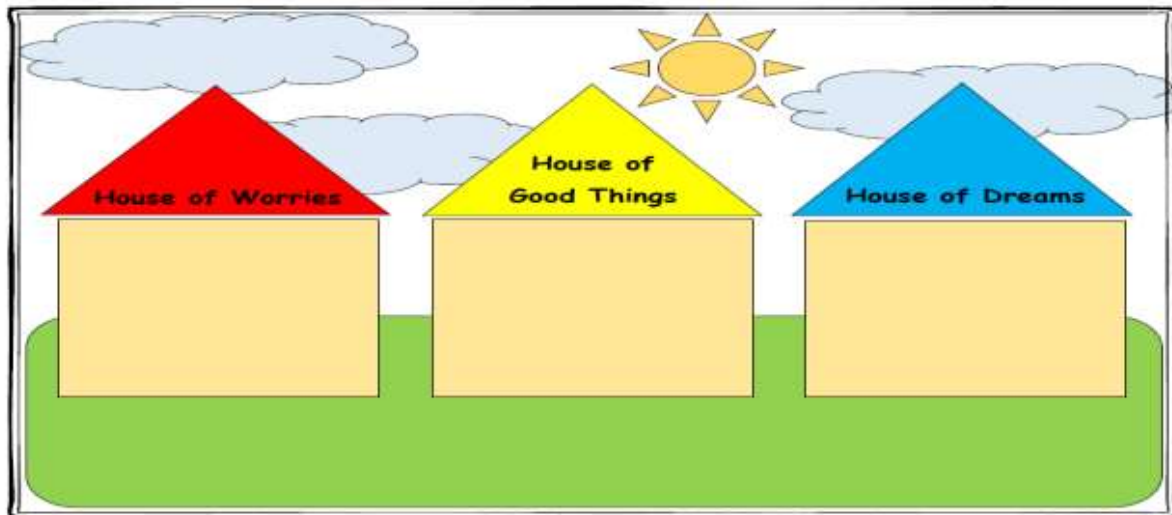
All conversations are non-judgemental. Most families need support from time to time. Seeking support is not a sign of weakness or poor parenting. We will make all the information we need to share with you clear and easy to understand. A copy of the Early Help Assessment and Our Family Plan will be provided to the family.

What happens if there is a safeguarding concern?



Three Houses

At World's End Junior, we are always willing to help. Please contact Mrs Taylor for further information or to arrange an Early Help meeting.



If your child has a concern, or you are concerned about your child, we will usually begin our support with the Three Houses tool. This allows the opportunity for the child's voice to be heard. We can then action any concerns raised, such as worries they have at school or at home, and plan what we can do to support your child and make a positive difference. We review these at the end of each term to monitor progress.

Pastoral Team

Our pastoral team help pupils break barriers to learning and those who may be going through a difficult time. Interventions can be provided for pupils going through bereavement. Other support available covers areas such as: anxiety, anger, self-esteem, self-harm, understanding neurodiversity including ADHD and autism, and other social, emotional, health and behavioural difficulties.

Other mentoring providing

- Practice our social skills.
- Recognise our feelings.
- Highlight the importance of transition in children's lives.
- Work on dealing with our emotions.
- Promote self-esteem and confidence
- Learn how to cope with difficulties at home.
- Develop friendships And much more...